



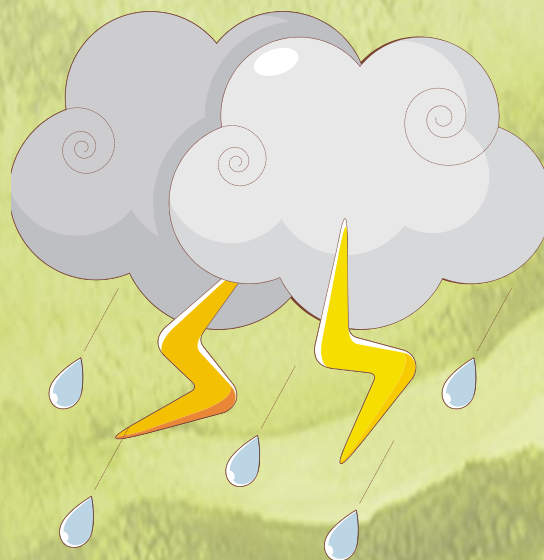
Crop Hail 2011

Row Crops

2011 has started out with record setting storms for our neighbors to the south & southeast.

You are farming at a time when crops are at record high prices per bushel and also at a time of record high input cost to raise this crop. Because of this scenario, it has never been more crucial to protect your crops from a devastating hail storm.

I realize most farmers have some sort of MPCl coverage and may even have carryover hail coverage through June 1st from last year's hail policy. However, the carry over policy may not have the proper limits to coincide with our current market prices of today. Therefore, we need to write a new crop hail policy with the proper coverages and acres for the 2011 crop year. Hail premium rates have not increased from last year, so it is a very good way to protect your farming operation. I encourage you to call or stop in so we can set up a plan which best suits your protection needs.



Gill Insurance Service, Inc.

Phone: 402.729.5157

Fax: 402.729.6546

515 F Street

PO BOX 576

Fairbury NE 68352

gillins@diodecom.net



Delete text and place photo here.

Before caption a goes here



Delete text and place photo here.

After caption goes here

**DELETE BOX, OR PLACE
TEXT OR LOGO HERE**

Phone: 555.555.5555

Fax: 555.555.5555

555 Street Address
City, State 55555

HEADLINE

**SUBHEAD. SUBHEAD.
SUBHEAD. SUBHEAD.**

Continue newsletter text here. Continue newsletter text here.
Continue newsletter text here. Continue newsletter text here.
Continue newsletter text here. Continue newsletter text here.
Continue newsletter text here. Continue newsletter text here.
Continue newsletter text here. Continue newsletter text here.
Continue newsletter text here. Continue newsletter text here.
Continue newsletter text here. Continue newsletter text here.
Continue newsletter text here. Continue newsletter text here.

Continue newsletter text here. Continue newsletter text here.
Continue newsletter text here. Continue newsletter text here.
Continue newsletter text here. Continue newsletter text here.

Continue newsletter text here. Continue newsletter text here.
Continue newsletter text here. Continue newsletter text here.
Continue newsletter text here. Continue newsletter text here.
Continue newsletter text here. Continue newsletter text here.
Continue newsletter text here. Continue newsletter text here.
Continue newsletter text here..

SUBHEAD

Continue newsletter text here. Continue newsletter text here.
Continue newsletter text here. Continue newsletter text here.
Continue newsletter text here. Continue newsletter text here.
Continue newsletter text here. Continue newsletter text here.
Continue newsletter text here. Continue newsletter text here.
Continue newsletter text here. Continue newsletter text here.
Continue newsletter text here. Continue newsletter text here.
Continue newsletter text here. Continue newsletter text here.
Continue newsletter text here. Continue newsletter text here.
Continue newsletter text here. Continue newsletter text here.
Continue newsletter text here. Continue newsletter text here.



